

# Paulinho

3175

by Peter Kienle  
7/14/20052

**A**

Samba

A

C $\Delta$ 9



A

G



A

C $\Delta$ 9



A

G

A



**B**

B $\flat$ /D

E $\flat$  $\Delta$

E $\emptyset$

D/F#



F/G

G# $\emptyset$

G/A

B $\flat$ +7

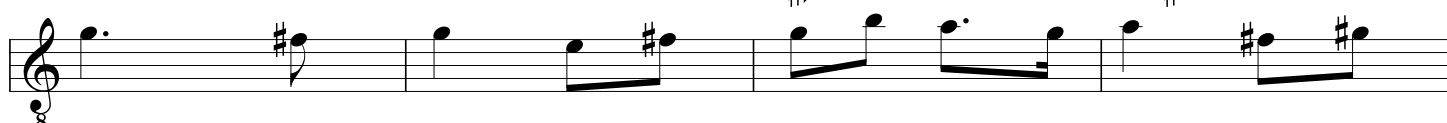


G/B

C $\Delta$

C# $\emptyset$

B/D#



D/F#

E $\Delta$

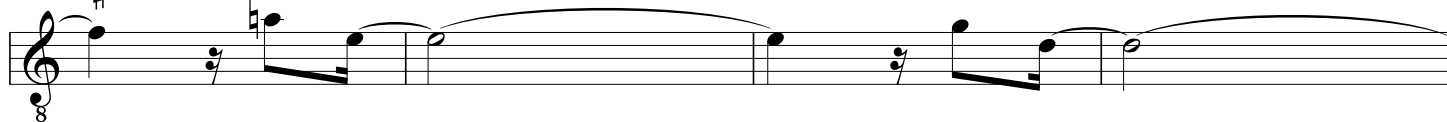
F#E



F#E

C/E

D/C



# Paulinho (2)

D/C F/G C/E F#Ø

A musical staff in treble clef with a key signature of one sharp (F#). The notes are: D4 (quarter), G4 (quarter), F#4 (quarter), E4 (quarter), D4 (quarter), C4 (quarter), B3 (quarter), A3 (quarter), G3 (quarter), F#3 (quarter), E3 (quarter), D3 (quarter). Chords are indicated above the staff: D/C, F/G, C/E, and F#Ø.

Bb/A D/C Esus E7

A musical staff in treble clef with a key signature of one sharp (F#). The notes are: Bb4 (quarter), A4 (quarter), G4 (quarter), F#4 (quarter), E4 (quarter), D4 (quarter), C4 (quarter), B3 (quarter), A3 (quarter), G3 (quarter), F#3 (quarter), E3 (quarter). Chords are indicated above the staff: Bb/A, D/C, Esus, and E7.

**C** A CΔ

A musical staff in treble clef with a key signature of one sharp (F#). The notes are: A4 (quarter), G4 (quarter), F#4 (quarter), E4 (quarter), D4 (quarter), C4 (quarter), B3 (quarter), A3 (quarter), G3 (quarter), F#3 (quarter), E3 (quarter), D3 (quarter). Chords are indicated above the staff: A and CΔ.

A G

A musical staff in treble clef with a key signature of one sharp (F#). The notes are: A4 (quarter), G4 (quarter), F#4 (quarter), E4 (quarter), D4 (quarter), C4 (quarter), B3 (quarter), A3 (quarter), G3 (quarter), F#3 (quarter), E3 (quarter), D3 (quarter). Chords are indicated above the staff: A and G.

CΔ C#Ø B/D# A/E

A musical staff in treble clef with a key signature of one sharp (F#). The notes are: C4 (quarter), B3 (quarter), A3 (quarter), G3 (quarter), F#3 (quarter), E3 (quarter), D3 (quarter), C3 (quarter), B2 (quarter), A2 (quarter), G2 (quarter), F#2 (quarter). Chords are indicated above the staff: CΔ, C#Ø, B/D#, and A/E.

C/Bb C/Bb

A musical staff in treble clef with a key signature of one sharp (F#). The notes are: C4 (quarter), Bb3 (quarter), Ab3 (quarter), G3 (quarter), F#3 (quarter), E3 (quarter), D3 (quarter), C3 (quarter), Bb3 (quarter), Ab3 (quarter), G3 (quarter), F#3 (quarter). Chords are indicated above the staff: C/Bb and C/Bb.